

Structural study of A_2CuTiO_6 ($A = Y, Tb-Lu$) compounds

Nicolas Floros, Job T. Rijssenbeek, Alex B. Martinson, Kenneth R. Poeppelmeier*

Department of Chemistry, Northwestern University, 2145 Sheridan Road, Evanston, IL 60208-3113, USA

Received 14 August 2002; accepted 30 September 2002

Dedicated to Professor Neil Bartlett on the occasion of his 70th birthday

Abstract

The A_2CuTiO_6 ($A = Y, Tb-Lu$) series has been reinvestigated in light of the recent discovery of cation order in structurally similar $La_4Cu_3MoO_{12}$ and $La_3Cu_2VO_9$. The crystal structure has been determined by electron and powder X-ray diffraction. The phases crystallize in an hexagonal symmetry, space group $P6_3cm$ with cell parameters $a \approx 6.2 \text{ \AA}$; $c \approx 11.5 \text{ \AA}$. In this series of compounds, the Cu(II) and Ti(IV) cations randomly occupy trigonal bipyramids which form layers separated by sevenfold coordinated A(III) cations. This series is isotypical with $LuMnO_3$.

© 2002 Éditions scientifiques et médicales Elsevier SAS. All rights reserved.

Keywords: Hexagonal structure; Transmission electron microscopy; X-ray diffraction

1. Introduction

The ideal cubic perovskite structure of $AMO_{3-\delta}$ oxides presents several distortions depending of the nature of A and M, the synthesis conditions and the oxygen ratio. The Goldschmidt tolerance factor [1,2], based on the differences of the A and M ionic radii, is frequently used to predict the type of distortion which can be expected. However, for $YAlO_3$ an unusual non-perovskite hexagonal structure, not predicted by the Goldschmidt factor, is observed [3]. It crystallizes in the space group $P6_3/mmc$ and is characterized by a layered structure in which the Al(III) ions adopt fivefold trigonal bipyramidal coordination.

Several closely related phases exist for the $Ln_{1+n}Cu_nM^{3+n}O_{3+3n}$ family ($Ln = \text{lanthanide}$) where M is a d^0 cation [4–6]. A powder neutron diffraction study has shown that the $n = 1$ member Er_2CuTiO_6 exhibits the same subcell as $YAlO_3$ but presents a supercell with $a(Er_2CuTiO_6) = a(YAlO_3) \times \sqrt{3}$. This structure is isotypical with that of $LuMnO_3$ [7], wherein the Cu(II) and Ti(IV) cations are randomly distributed over the five coordinate sites [4]. Studies of the structurally related $n = 2$ member $La_3Cu_2VO_9$ [5], with 2:1 ratio of Cu:V, and $n = 3$ member $La_4Cu_3MoO_{12}$ [6], with a 3:1 ratio of Cu:Mo, have recently shown the ex-

istence of other supercells of the $YAlO_3$ structure. In contrast to Er_2CuTiO_6 where the Cu:Ti ratio is 1:1, cation ordering occurs within the layers leading to distinct supercells for $M = V(V)$ and $Mo(VI)$. In light of the cation ordering in $La_3Cu_2VO_9$ and $La_4Cu_3MoO_{12}$, we have re-investigated the A_2CuTiO_6 ($A = Y, Tb-Lu$) series to establish the nature of the Cu/Ti arrangement. We report here a structural study of the complete series by powder X-ray diffraction and electron diffraction.

2. Experimental

The phases A_2CuTiO_6 ($A = Y, Tb-Lu$) were synthesized in air in two steps. Intimate mixtures of A_2O_3 , CuO and TiO_2 (purity > 99.9%), were weighed in stoichiometric proportions and heated in an alumina crucible at $900 \text{ }^\circ\text{C}$ for 24 h. Then they were ground again, pressed into pellets and re-heated at $1050 \text{ }^\circ\text{C}$ for 150 h. Samples were slow-cooled and quenched in air without any significant change powder X-ray and electron diffraction patterns. In all cases, two secondary phases were detected: $A_2Ti_2O_7$ (pyrochlore structure) and CuO. Although we have thus far been unable to suppress the formation of these secondary phases, we continue to investigate their origin.

For the Transmission Electronic Microscopy (TEM) studies, polycrystalline samples of air quenched and slow cooled Ho_2CuTiO_6 were deposited on holey carbon grids. The Elec-

* Corresponding author.

E-mail address: krp@northwestern.edu (K.R. Poeppelmeier).

tron Diffraction studies (ED) were carried out on an 8100 Hitachi at 200 kV.

The powder X-ray diffraction (PXRD) data have been recorded with a Rigaku RINT 2000 diffractometer (Cu $K\alpha$ radiation). The diffraction patterns were recorded over the angular range $10^\circ \leq 2\theta \leq 80^\circ$ in 0.02° increments and treated by profile analysis using the Rietveld technique using the FULLPROF program (Version 1.7a) [8].

3. Results and discussion

The reconstruction of the reciprocal space from the electron diffraction along the crystallographic axes shows a hexagonal cell with $a \approx 6.2 \text{ \AA}$ and $c \approx 11.5 \text{ \AA}$. The conditions limiting the reflection are $h\bar{h}0l$: $l = 2n$ leading to the following possible space groups: $P6_3cm$; $P\bar{6}c2$ and $P6_3/mcm$. The $[01\bar{1}0]$ and $[11\bar{2}0]$ ED patterns of the air quenched $\text{Ho}_2\text{CuTiO}_6$ are shown Fig. 1. No super-structural reflections were observed in either the slow cooled or quenched samples.

The unit cell parameters and the possible space groups are consistent with the LuMnO_3 structure. The PXRD study confirms the structural similarity. Other than small shifts in 2θ caused by the different sizes of the cations, all A_2CuTiO_6 PXRD experimental patterns are similar to those of LuMnO_3 [7], YGaO_3 [9] and YInO_3 [10]. A typical X-ray diffractogram ($\text{Ho}_2\text{CuTiO}_6$) is shown in Fig. 2.

To select the correct space group, the PXRD profile of each member of the A_2CuTiO_6 series was refined based on each of the three structural models suggested by the ED. Atomic positions for each space group are given in Table 1. Notice that in all three space groups there exists only a single crystallographic site for Cu/Ti, thus no cation ordering can be introduced in any of these models for A_2CuTiO_6 . Electron diffraction is particularly sensitive to super-structural features, therefore the fact that no supercell reflections were observed is strong evidence that no ordering occurs. This observation emphasizes an important difference between the A_2CuTiO_6 compounds and $\text{La}_3\text{Cu}_2\text{VO}_9$ or $\text{La}_4\text{Cu}_3\text{MoO}_{12}$, where an ordering of copper and vanadium or molybdenum, respectively, was observed.

For each member of the series, Rietveld refinements have been carried out using the three different space groups. Concerning the secondary phases, only $\text{A}_2\text{Ti}_2\text{O}_7$ was taken into account in the refinements since CuO was present in such low amounts that no significant variations of the reliability factors were observed. For the refinements in the noncentrosymmetric (polar) space group $P6_3cm$, the z parameter of Cu/Ti site was arbitrarily fixed to $z = 0$ in order to fix the origin along the z direction. The results of this study, given in Table 2, show that whatever the A cation is, the best reliability factors are always obtained with space group $P6_3cm$. These observations clearly show that these phases adopt the structure of LuMnO_3 and its related series $\text{A}'\text{MnO}_3$ ($\text{A}' = \text{Y}, \text{Dy-Lu}$). The evolutions of the

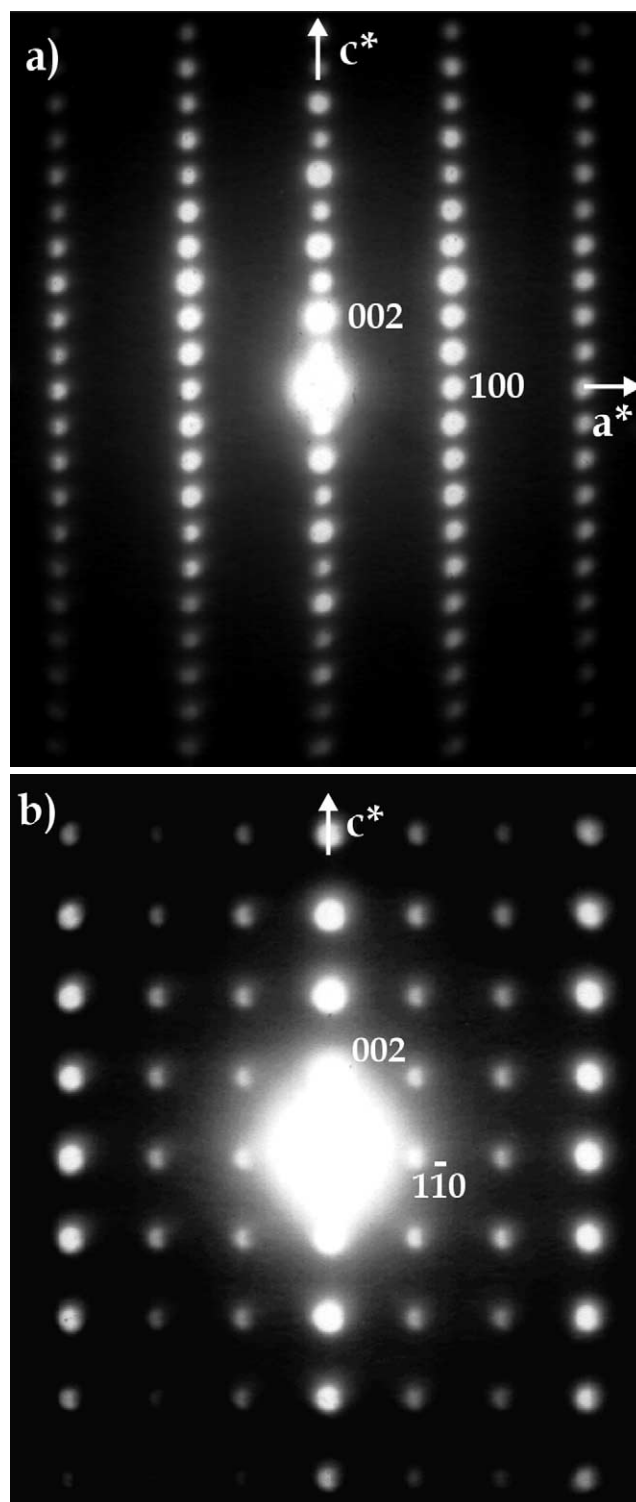


Fig. 1. ED patterns of air quenched $\text{Ho}_2\text{CuTiO}_6$. (a) along the $[01\bar{1}0]$ zone axis; (b) along the $[11\bar{2}0]$ zone axis.

cell parameters and the volume are given in Table 3. As expected the cell volume decreases with the ionic radius of the A cation. A detailed structural analysis will require neutron diffraction data which are necessary to accurately determine the oxygen positions. At the present time, neutron

Table 1

A_2CuTiO_6 atomic positions in $P6_3cm$, $P\bar{6}c2$ and $P6_3/mcm$. The approximate values of variable parameters are given in parentheses

	$P6_3cm$	$P\bar{6}c2$	$P6_3/mcm$
Cu/Ti	6c ($x \approx 1/3^*$; $0; 0^f$)	6k ($x \approx 1/3^*$; $y \approx 0^*$; $1/4$)	6g ($x \approx 1/3^*$; $0; 1/4$)
A	4b ($1/3; 2/3; z \approx 1/4^*$) 2a ($0; 0; z \approx 1/4^*$)	2a ($0; 0; 0$) 2c ($1/3; 2/3; 0$) 2e ($2/3; 1/3; 0$)	4d ($1/3; 2/3; 0$) 2b ($0; 0; 0$)
O1	6c ($x \approx 1/3^*$; $0; z \approx 0.16^*$)	12l ($x \approx 1/3^*$; $y \approx 0^*$; $z \approx 0.42^*$)	12k ($x \approx 1/3^*$; $0; z \approx 0.42^*$)
O2	6c ($x \approx 2/3^*$; $0; z \approx 0.35^*$)		
O3	4b ($0; 0; z \approx 0^*$)	2b ($0; 0; 1/4$)	4c ($1/3; 2/3; 1/4$)
O4	2a ($1/3; 2/3; z \approx 1/2^*$)	2d ($1/3; 2/3; 1/4$) 2f ($2/3; 1/3; 1/4$)	2a ($0; 0; 1/4$)

* Refined parameters.

^f Was fixed during the refinement.

Table 2

R_{Bragg} and χ^2 values obtained for the different compositions of A_2CuTiO_6 in $P6_3cm$, $P\bar{6}c2$ and $P6_3/mcm$

Compound	$P6_3cm$		$P\bar{6}c2$		$P6_3/mcm$	
	R_{Bragg} (%)	χ^2	R_{Bragg} (%)	χ^2	R_{Bragg} (%)	χ^2
Y_2CuTiO_6	9.5	3.9	11.1	6.4	11.2	6.7
Tb_2CuTiO_6	9.8	2.3	12.5	2.6	12.3	2.5
Dy_2CuTiO_6	8.9	1.8	10.0	1.9	10.1	1.9
Ho_2CuTiO_6	4.2	2.6	11.1	6.9	20.2	10.6
Er_2CuTiO_6	6.2	2.2	9.1	3.7	9.0	3.5
Tm_2CuTiO_6	5.7	2.1	12.3	3.5	11.9	4.4
Yb_2CuTiO_6	7.2	1.6	21.3	2.9	11.9	2.1
Lu_2CuTiO_6	6.4	2.1	19.2	4.7	11.8	3.6

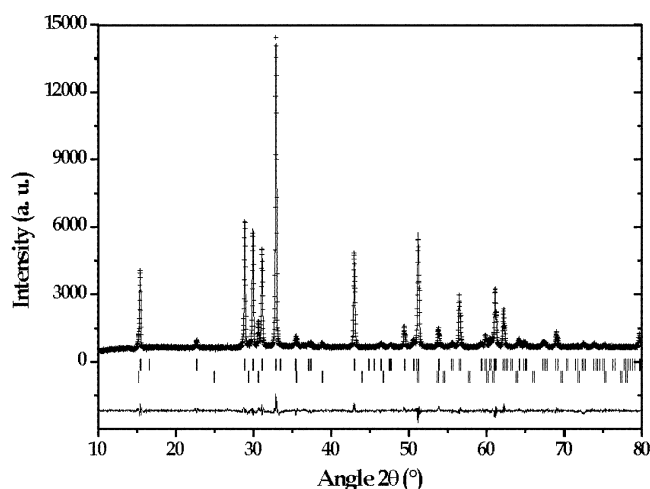


Fig. 2. Experimental (cross), calculated and difference (solid lines) powder X-ray diffraction patterns of Ho_2CuTiO_6 . The positions of the Bragg reflections (top Ho_2CuTiO_6 , bottom $Ho_2Ti_2O_7$) are shown by small vertical lines.

diffraction data are only available for one member of the series, Er_2CuTiO_6 (see below).

The structure can be described as a stacking, along the c axis, of hexagonal layers of A and layers of corner sharing $(Cu/Ti)O_5$ trigonal bipyramids (Fig. 3). Each equatorial oxygen (O3 and O4) is shared by three bipyramids and the apical oxygens (O1 and O2) lead to two non-equivalent, long and short, $Cu/Ti-O_{ap}$ distances. According to the neutron

Table 3

A_2CuTiO_6 cell parameters and volume

Compound	a (Å)	c (Å)	V (Å ³)
Tb_2CuTiO_6	6.252(1)	11.422(1)	386.6
Dy_2CuTiO_6	6.214(1)	11.483(1)	384.0
Ho_2CuTiO_6	6.180(1)	11.499(1)	380.3
Y_2CuTiO_6	6.172(1)	11.482(1)	378.8
Er_2CuTiO_6	6.144(1)	11.506(2)	376.1
Tm_2CuTiO_6	6.113(1)	11.504(1)	372.5
Yb_2CuTiO_6	6.095(2)	11.515(3)	370.5
Lu_2CuTiO_6	6.057(1)	11.516(2)	365.9

diffraction study [4] of Er_2CuTiO_6 , the difference between the two $Cu/Ti-O_{ap}$ distances is large (0.115 Å) compared to that observed in $YMnO_3$ (0.001 Å) [11], $ErMnO_3$ (0.032 Å) [12], $YbMnO_3$ (0.001 Å) [13], $LuMnO_3$ (0.023 Å) [14], $YGaO_3$ (0.002 Å) [9] and $YInO_3$ (0.01 Å) [10].

Although the $(Ln,Y)_2CuTiO_6$ and $(Ln,Y)MnO_3$ series are very similar, some significant differences should be noted. Both series exhibit an orthorhombic ($GdFeO_3$ -type distorted perovskite structure) to hexagonal structural transition as a function of the lanthanide size. In the case of the $A'MnO_3$ series, the orthorhombic phase is stabilized from La to Tb, the hexagonal one for Tm, Yb and Lu whereas both symmetries are observed for Y, Dy, Ho and Er [7]. On the other hand, a sharp separation between the two symmetries occurs in $(Ln,Y)_2CuTiO_6$ series: the orthorhombic perovskite structure is observed for lanthanides larger than Tb and the

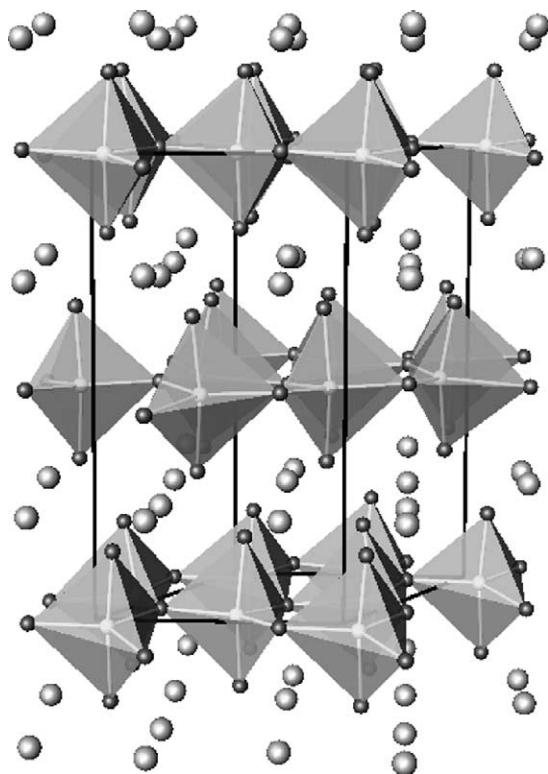


Fig. 3. Perspective drawing of the structure of A₂CuTiO₆.

hexagonal structure from Tb to Lu including Y [4]. Moreover, any attempt to substitute part of the manganese by another transition element in YM_xMn_{1-x}O₃ (M = Fe, Cr, Al, Co, Ni, Cu) series [15,16] inevitably changes the structure to perovskite for small amounts of M with a maximum of $x = 0.15$ in the cases of Al and Fe. These observations highlight the fact that the hexagonal phase is more easily stabilized when the trigonal bipyramidal site is occupied by a 50:50 Cu(*d*⁹)/Ti(*d*⁰) mixture compared to manganese (*d*⁴) alone.

4. Conclusion

We have reported a structural study of the A₂CuTiO₆ (A = Y, Tb–Lu) series. These compounds crystallize in space group *P*6₃*cm* and are isostructural with LuMnO₃. In contrast to both La₄Cu₃MoO₁₂ and La₃Cu₂VO₉, no ordering of the Cu and Ti cations has been observed, which is in agreement with the previous neutron diffraction study of Er₂CuTiO₆. Owing to the non-centrosymmetry of the *P*6₃*cm* space group, A'MnO₃ compounds exhibit ferro-

electric properties [17–19] and further efforts to synthesize A₂CuTiO₆ single crystals and thin films, to measure the expected ferroelectric properties, are in progress.

Acknowledgements

This work was supported by National Science Foundation (NSF), Solid State Chemistry (Award No. DMR-9727516) for NF and JTR and by a NSF graduate fellowship for JTR. The use of the Central Facilities at the Materials Research Center of Northwestern University was supported by the MRSEC program of the NSF (Grant DMR-0076097). ABM participated in the Research Experience for Undergraduates program of the NU-MRSEC (NSF DMR-0076097).

References

- [1] J.B. Goodenough, J. M. Longo, Landolt-Bornstein, New Series, Group III/Vol. 4a. Springer-Verlag, New York (1970).
- [2] V.M. Goldschmidt, Skrifter Norske Videnskaps-Akad. Oslo, I. Mat.-Naturv. Kl. (1926) 8.
- [3] F. Berthaut, J. Mareschal, C.R. Acad. Sci. C 257 (1963) 867.
- [4] M.T. Anderson, K.B. Greenwood, G.A. Taylor, K.R. Poeppelmeier, Prog. Solid State Chem. 22 (1993) 197.
- [5] D.A. Vander Griend, S. Malo, S.J. Barry, N.M. Dabbousch, K.R. Poeppelmeier, V.P. Dravid, Solid State Sciences 3 (2001) 569.
- [6] D.A. Vander Griend, S. Boudin, V. Caignaert, K.R. Poeppelmeier, Y. Wang, V.P. Dravid, M. Azuma, M. Takano, Z. Hu, J. Jorgensen, J. Am. Chem. Soc. 121 (1999) 4787.
- [7] H.L. Yakel, W.C. Koehler, E.F. Berthaut, E.F. Forrat, Acta Cryst. 16 (1963) 957.
- [8] J. Rodriguez-Carjaval, Abstracts of Satellite Meeting on Powder Diffraction of XVth Congr. Int. Union of Crystallography, Toulouse, 1990, p. 127.
- [9] S. Geller, J.B. Jeffries, P.J. Curlander, Acta Cryst. B 31 (1975) 2770.
- [10] C.W.F.T. Pistorius, G.J. Kruger, J. Inorg. Nucl. Chem. 38 (1976) 1471.
- [11] B.B. van Aken, A. Meetsma, T.T.M. Palstra, Acta Cryst. C 57 (2001) 230.
- [12] B.B. van Aken, A. Meetsma, T.T.M. Palstra, Acta Cryst. E 57 (2001) i38.
- [13] B.B. van Aken, A. Meetsma, T.T.M. Palstra, Acta Cryst. E 57 (2001) i87.
- [14] B.B. van Aken, A. Meetsma, T.T.M. Palstra, Acta Cryst. E 57 (2001) i101.
- [15] H. Ismailzade, G.A. Smolenskii, V.I. Nesterenko, F.A. Agaev, Phys. Stat. Sol. A 5 (1971) 83.
- [16] C. Moure, D. Gutierrez, O. Pena, P. Duran, J. Solid State Chem. 163 (2002) 377.
- [17] F. Berthaut, F. Forrat, P. Fang, C.R. Acad. Sci. C (1963) 1958.
- [18] V.A. Bokov, G.A. Smolenskii, S.A. Kizhaev, I.E. Myl'nikova, Sov. Phys. Solid State 5 (1964) 2646.
- [19] I.G. Ismailzade, S.A. Kizhaev, Sov. Phys. Solid State 7 (1965) 236.